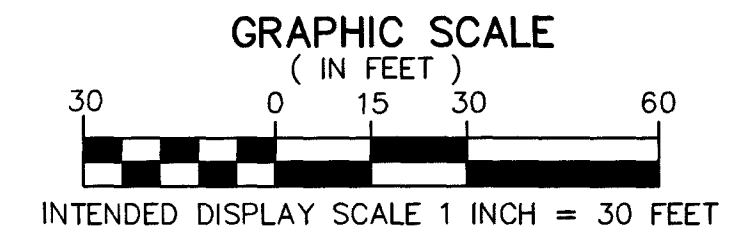
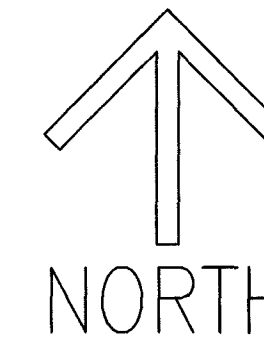


THIS INSTRUMENT PREPARED BY
DAVID P. LINDLEY
OF
CAULFIELD & WHEELER, INC.
SURVEYORS - ENGINEERS - PLANNERS
7900 GLADES ROAD, SUITE 100
BOCA RATON, FLORIDA 33434 - (561)392-1991
CERTIFICATE OF AUTHORIZATION NO. LB3591

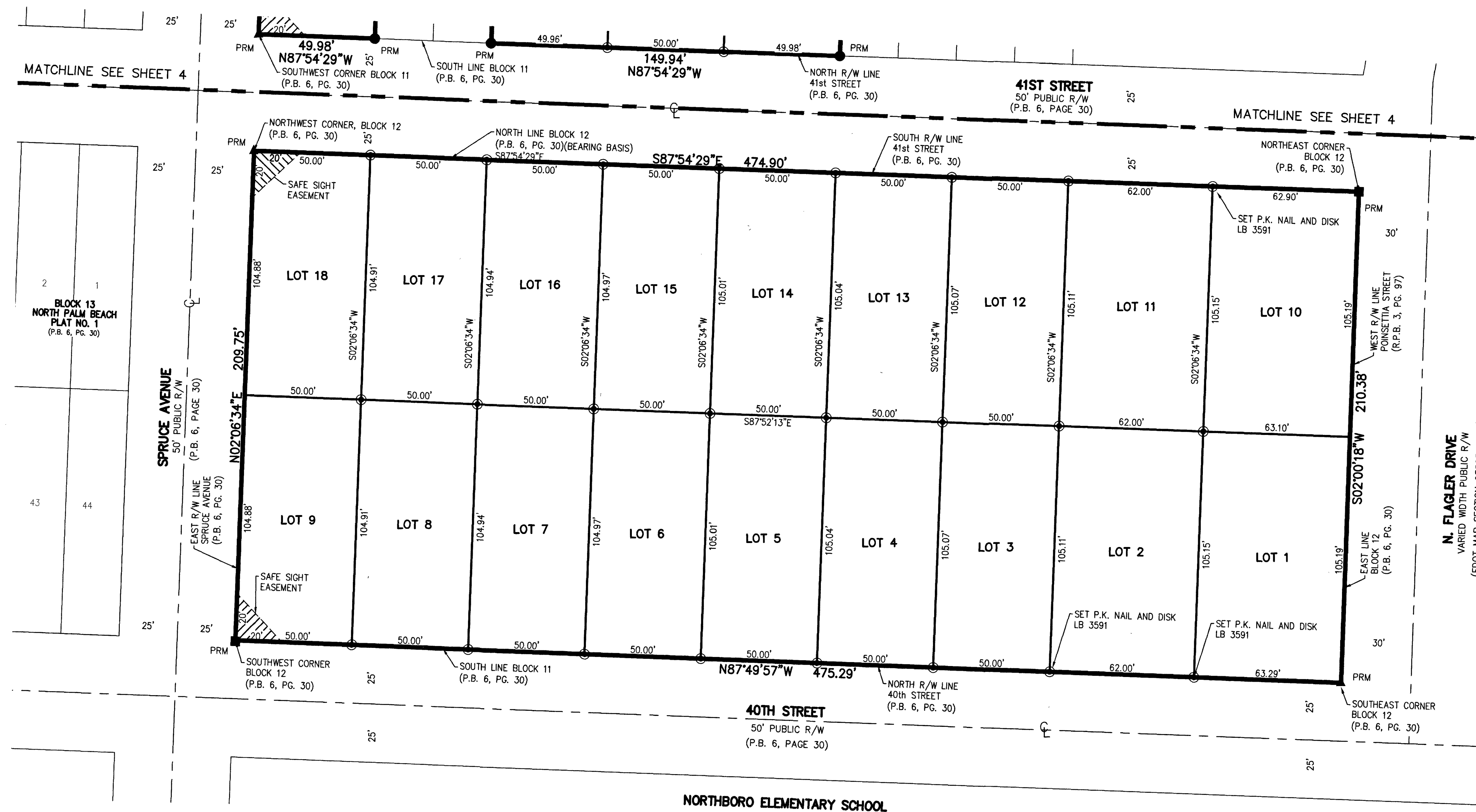
NORTH PALM BEACH PLAT NO. 1, BLOCKS 8-12 REPLAT

A REPLAT OF LOTS 19 AND 20, BLOCK 8, LOTS 11 THROUGH 12, 17 THROUGH 23, AND 24 THROUGH 30, BLOCK 9, LOTS 11 THROUGH 16, AND 24 THROUGH 32, BLOCK 10, LOTS 13 THROUGH 18, 21, 22, 25, 26, AND 31 THROUGH 36, BLOCK 11, AND ALL OF BLOCK 12, NORTH PALM BEACH PLAT NO. 1, AS RECORDED IN PLAT BOOK 6, PAGE 30, OF THE PUBLIC RECORDS OF PALM BEACH COUNTY, FLORIDA, LYING IN SECTIONS 4 AND 9, TOWNSHIP 43 SOUTH, RANGE 43 EAST, CITY OF WEST PALM BEACH, PALM BEACH COUNTY, FLORIDA.



23

SHEET 5 OF 5



NORTHBORO ELEMENTARY SCHOOL